

**On-Site Detention Calculation Sheet for Upper Parramatta River Catchment  
HED Secondary Outlet**

|               |   |
|---------------|---|
| Project:      | Suspended OSD Tank                        |
| Site Address: | 2-6 Bold St And 80-82 Cowper St Granville |
| Job No:       | UMB13035.HYD.DA                           |
| Designer:     | Joe Bacha                                 |
| Telephone:    | (02) 8607 5051                            |

| Site Data                                 |                                  |                      |                      |
|---|----------------------------------|----------------------|----------------------|
| OSD Area:                                 | Upper Parramatta River Catchment |                      |                      |
| L.G.A                                     | Parramatta City Council          |                      |                      |
| Site Area                                 | 0.22287 ha                       | 2,229 m <sup>2</sup> |                      |
| Total Roof Area                           | 0.05681 ha                       | 568 m <sup>2</sup>   |                      |
| Area of Site draining to OSD Storage      | 0.21292 ha                       | 2,129 m <sup>2</sup> | Satisfactory         |
| Residual Site Area (Lot Area - Roof Area) | 0.166 ha                         |                      |                      |
| Area Bypassing Storage                    | 0.00995 ha                       |                      |                      |
| Area Bypassing / Residual Site Area       | 6.0%                             |                      | Satisfactory 30% Max |
| No. of Dwellings on Site                  | 1                                |                      | Satisfactory         |
| Site Area per Dwelling                    | 0.223 ha                         |                      |                      |
| Roof Area per Dwelling                    | 0.057 ha                         |                      |                      |

| Basic OSD Parameters |                    |                        |                        |
|----------------------|--------------------|------------------------|------------------------|
| Basic SSR Vols       | Extended Detention | 300 m <sup>3</sup> /ha | Detention              |
| Basic SRDs           | Primary Outlet     | 40 L/s/ha              | Total Storage          |
|                      | Secondary Outlet   |                        | 455 m <sup>3</sup> /ha |
|                      |                    |                        | 150 L/s/ha             |

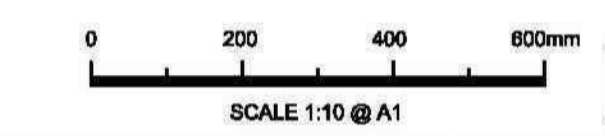
| OSD Tank Bypass                  |           |  |            |
|----------------------------------|-----------|--|------------|
| Residual Lot Capture in OSD Tank | 94%       |  |            |
| Adjusted SRDs                    | 38 L/s/ha |  | 138 L/s/ha |

| OSD Calculations                          |                     |                                   |                         |
|---|---------------------|-----------------------------------|-------------------------|
| Basic SSR Volume                          | Extended Detention  | 66.86 m <sup>3</sup>              | Detention               |
| Total Rainwater Tank Credits              | 0.00 m <sup>3</sup> | Total Storage                     | 101.41 m <sup>3</sup>   |
| Storage Volume                            |                     | Total                             | 101.41 m <sup>3</sup>   |
| Storage Volume                            | Extended Detention  | 66.86 m <sup>3</sup>              | Flood Detention Storage |
| OSD Discharges                            | Primary Outlet      | 8.51 L/s                          | Secondary Outlet        |
|   |                     |                                   | 30.76 L/s               |
| RL of Top Water Level of Storage          | 12.218 m            |                                   | 12.498 m                |
| RL of Orifice Centre-line                 | 11.650 m            |                                   | 11.650 m                |
| Number of Orifices                        | 1                   |                                   | 1                       |
| Estimated Downstream Flood Level          | 10.63 1.5 yr ARI    |                                   | 10.63 100 yr ARI        |
| Downstream FL - RL of Orifice Centre-line | -1.02 Satisfactory  |                                   | Satisfactory -1.02 m    |
| Design Head to Orifice Centre             | 0.568 m             | TWL Ext Detn Storage - RL Orifice | 0.568 m                 |
| Calculated Orifice Diameter               | 74 mm Satisfactory  |                                   | Satisfactory 140 mm     |

| Overflow Weir & Freeboard Calculation |  |                                       |          |
|---------------------------------------|--|---------------------------------------|----------|
| RL of Minimum Habitable Floor Level   |  |                                       | 12.500 m |
| RL of Minimum Garage Floor Level      |  |                                       | 12.500 m |
| Length of Overflow Weir               |  |                                       | 1.35 m   |
| Site Runoff Coefficient               |  | Parramatta City Council               | 0.75     |
| Storm Intensity (5 min 100 yr ARI)    |  |                                       | 206 mm/h |
| Peak Flow over Weir                   |  |                                       | 91.4 L/s |
| Depth of Flow over Weir               |  |                                       | 120 mm   |
| Freeboard to Habitable Floor          |  | Unacceptable - Min Freeboard = 200 mm | -118 mm  |
| Freeboard to Garage Floor             |  | Unacceptable - Min Freeboard = 100 mm | -118 mm  |

| Rainwater Tank Calculations (per Dwelling)  |                     |   |                     |
|---|---------------------|---|---------------------|
| Only Complete this Section if a Rainwater Tank Airspace Credit is Claimed               |                     |   |                     |
| The calculations assume that the same size rainwater tank is installed on each dwelling |                     |   |                     |
|   | Min                 | Max   |                     |
| % of Roof draining to Rainwater Tank  | 80.0%               | Satisfactory                                | 0.0% 100%           |
| Total Rainwater Tank Volume   | 0.00 kL             | Minimum 0.0 kL                              |                     |
| Min Volume that triggers Top-up   | 0.00 kL             | Note - Min Vol in Tank < 10% Total Tank Vol |                     |
| Total Tank Vol - Min Top-up Vol   | 0.00 kL             |   |                     |
| Dedicated Airspace  |                     |   |                     |
| Dedicated Airspace  | 0.00 kL             | Satisfactory                                |                     |
| Dynamic Airspace  |                     |   |                     |
| Maximum Tank PSD  | 40 L/s/ha           |   |                     |
| Maximum Tank Discharge  | 0.0 L/s             |   |                     |
| Maximum Head to Centre of Tank Orifice  | 0.000 m             | No Dedicated Airspace                       |                     |
| Calculated Orifice Diameter   | 0 mm                | No Dedicated Airspace                       |                     |
| Maximum Dynamic Storage (Nett Vol)  | 0.00 kL             | Controls minimum % Roof to Rainwater Tank   |                     |
| Daily Demand on Rainwater Tank  | 0.657 kL/d          | Satisfactory                                |                     |
| Dynamic Airspace at start of Storm  | 0.00 kL             |   |                     |
| Extended Detention  |                     |   |                     |
| Dynamic Airspace Credit   | 0.00 kL             |   | Detention           |
| Combined Rainwater Tank Credit  | 0.00 kL             |   | 0.00 kL             |
| Maximum Rainwater Tank Credit   | 0.00 kL             |   | 0.00 kL             |
| Rainwater Tank Credit per Dwelling  | 0.00 kL             |   | 0.00 kL             |
| Rainwater Tank Credit for the Site  | 0.00 m <sup>3</sup> |   | 0.00 m <sup>3</sup> |

Signature: \_\_\_\_\_ Date: 30 / 06 / 2014



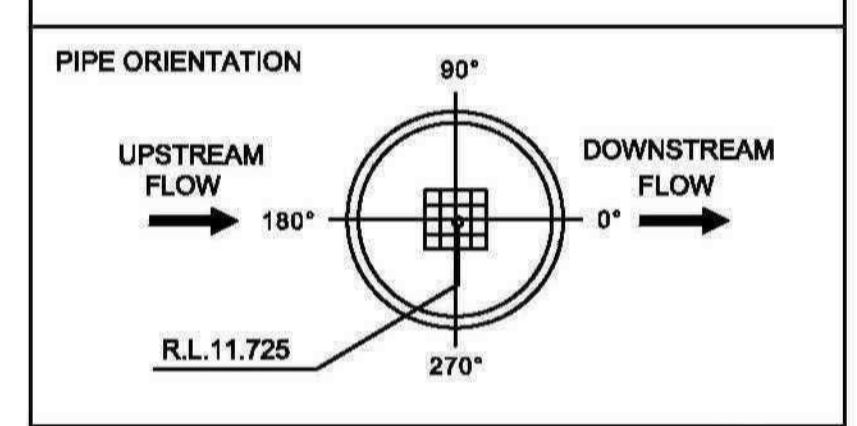
**NOT FOR CONSTRUCTION**

**SITE SPECIFIC DATA REQUIREMENTS**

|  |     |
|--|-----|
| STRUCTURE ID                                 | 1   |
| WATER QUALITY FLOW RATE (L/S)                | 3.3 |
| PEAK FLOW RATE (L/S)                         | 83  |
| RETURN PERIOD OF PEAK FLOW (yrs)             | XXX |
| # OF CARTRIDGES REQUIRED (8-22)              | 12  |
| CARTRIDGE HEIGHT (310, 460 or 690mm)         | 460 |
| MEDIA TYPE (PERLITE, PERLITE/ZEOLITE OR ZPG) | ZPG |

|                      |      |
|----------------------|------|
| PRECAST VAULT WEIGHT | - kg |
| PRECAST LID WEIGHT   | - kg |

| PIPE DATA:    | I.L.   | MATERIAL | DIAMETER |
|---------------|--------|----------|----------|
| INLET PIPE #1 | 11.725 | PVC      | 160      |
| INLET PIPE #2 | N/A    | N/A      | N/A      |
| OUTLET PIPE   | 11.725 | PVC      | 160      |

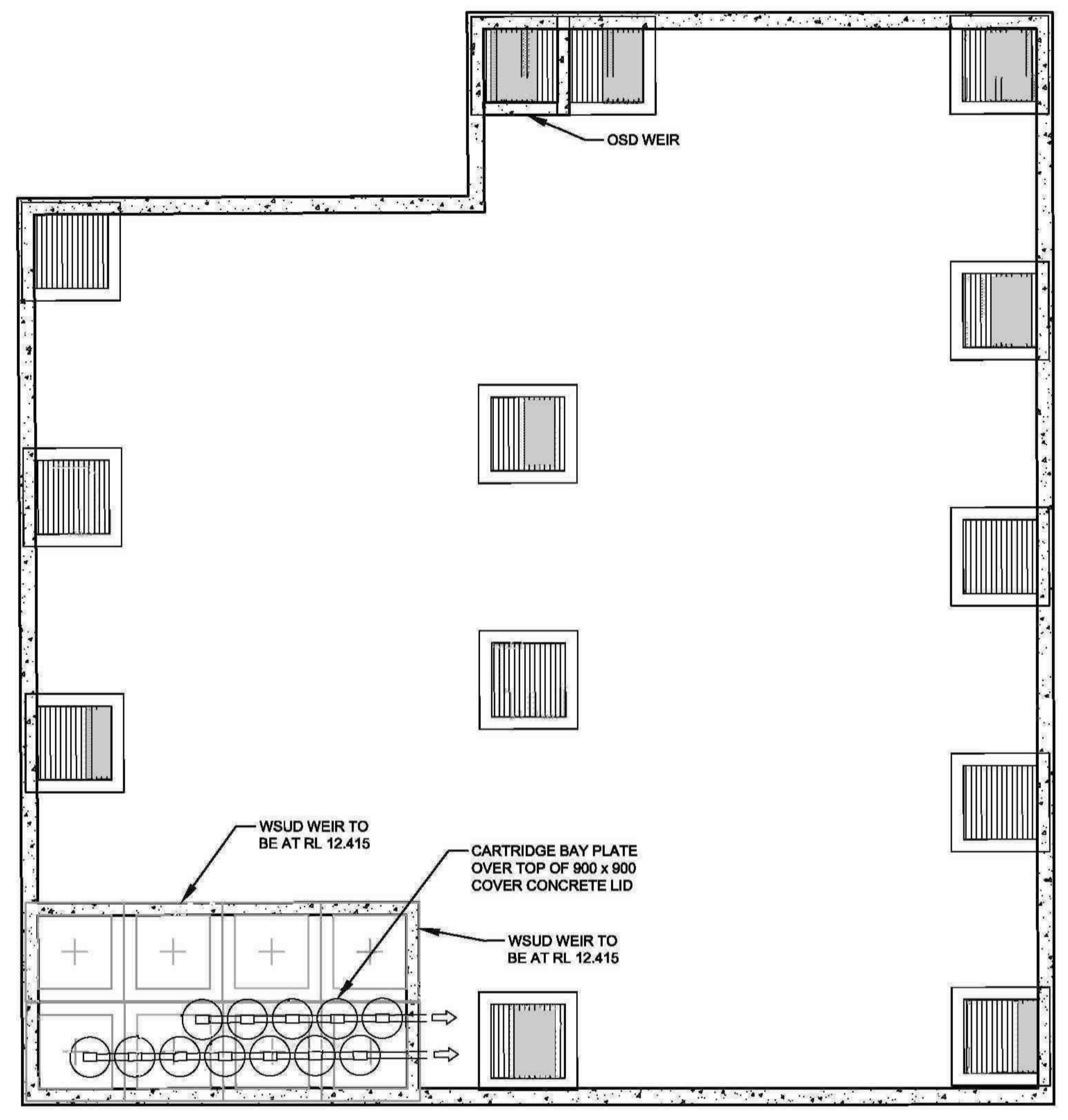


|                        |        |
|------------------------|--------|
| LADDER                 | YES/NO |
| ANTI-FLOTATION BALLAST | N/A    |
|                        | N/A    |

**STORMFILTER TABLE**  
N.T.S.

**GENERAL NOTES**

- INLET AND OUTLET PIPING SHALL BE SPECIFIED BY SITE CIVIL ENGINEER (SEE PLANS) AND PROVIDED BY CONTRACTOR. STORMFILTER IS PROVIDED WITH OPENINGS AT INLET AND OUTLET LOCATIONS.
- IF THE PEAK FLOW RATE, AS DETERMINED BY THE SITE CIVIL ENGINEER, EXCEEDS THE PEAK HYDRAULIC CAPACITY OF THE PRODUCT, AN UPSTREAM BYPASS STRUCTURE IS REQUIRED. PLEASE CONTACT STORMWATER360 FOR OPTIONS.
- THE FILTER CARTRIDGE(S) ARE SIPHON-ACTUATED AND SELF-CLEANING. THE STANDARD DETAIL DRAWING SHOWS THE MAXIMUM NUMBER OF CARTRIDGES. THE ACTUAL NUMBER SHALL BE SPECIFIED BY THE SITE CIVIL ENGINEER ON SITE PLANS OR IN DATA TABLE BELOW. PRECAST STRUCTURE TO BE CONSTRUCTED IN ACCORDANCE WITH AS3600.
- FOR SHALLOW, LOW DROP OR SPECIAL DESIGN CONSTRAINTS, CONTACT STORMWATER360 FOR DESIGN OPTIONS.
- ALL WATER QUALITY PRODUCTS REQUIRE PERIODIC MAINTENANCE AS OUTLINED IN THE O&M GUIDELINES. PROVIDE MINIMUM CLEARANCE FOR MAINTENANCE ACCESS.
- STRUCTURE AND ACCESS COVERS DESIGNED TO MEET AUSTRROADS T44 LOAD RATING WITH 0.2m FILL MAXIMUM.
- THE STRUCTURE THICKNESSES SHOWN ARE FOR REPRESENTATIONAL PURPOSES AND VARY REGIONALLY.
- ANY BACKFILL DEPTH, SUB-BASE, AND OR ANTI-FLOTATION PROVISIONS ARE SITE-SPECIFIC DESIGN CONSIDERATIONS AND SHALL BE SPECIFIED BY SITE CIVIL ENGINEER.
- STORMFILTER BY STORMWATER360: SYDNEY (AU) PHONE: (02) 9525 5833, BRISBANE (AU) PHONE: (07) 3272 1872.

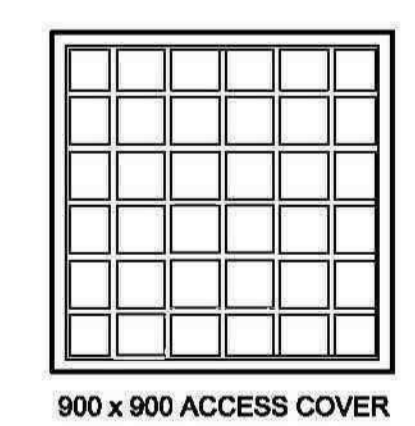
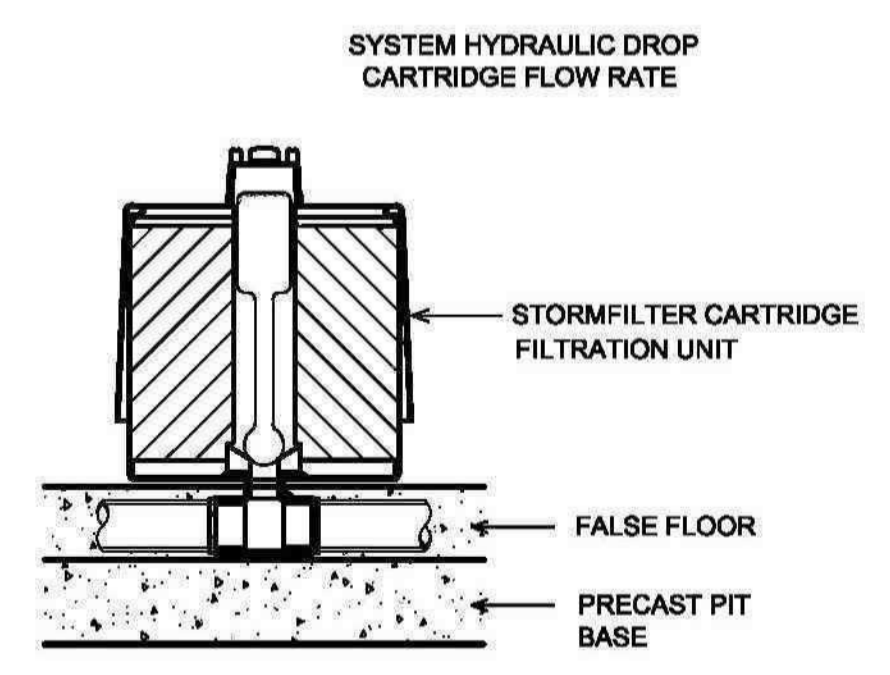


**UNDERGROUND COMBINED OSD & WSUD TANK DETAIL**  
**PLAN VIEW**  
SCALE 1:50

**STORMFILTER DESIGN TABLE**

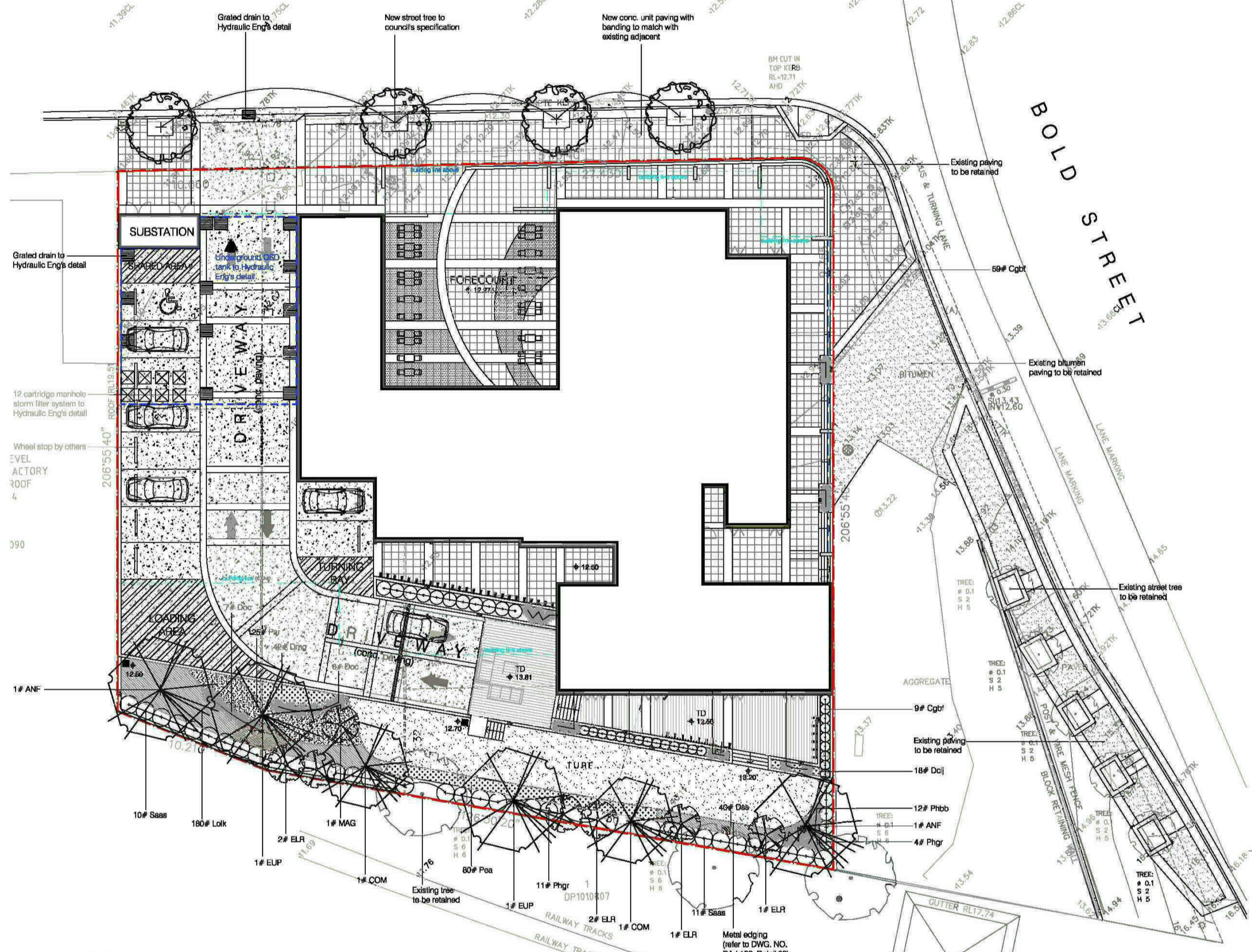
- STORMFILTER TREATMENT CAPACITY VARIES BY NUMBER OF FILTER CARTRIDGES INSTALLED AND BY REGION SPECIFIC INTERNAL FLOW CONTROLS. CONVEYANCE CAPACITY IS RATED AT 80%.
- THE STANDARD CONFIGURATION IS SHOWN. ACTUAL CONFIGURATION OF THE SPECIFIED STRUCTURE(S) PER CIVIL ENGINEER WILL BE SHOWN ON SUBMITTAL DRAWING(S).
- ALL PARTS PROVIDED AND INTERNAL ASSEMBLY BY STORMWATER360 AUSTRALIA UNLESS OTHERWISE NOTED.

| CARTRIDGE HEIGHT                                   | 690  |      | 460  |      | 310  |      |
|--|------|------|------|------|------|------|
| SYSTEM HYDRAULIC DROP (H - REQ'D. MIN.)            | 930  |      | 700  |      | 550  |      |
| TREATMENT BY MEDIA SURFACE AREA L/S/m <sup>2</sup> | 1.4  | 0.7  | 1.4  | 0.7  | 1.4  | 0.7  |
| CARTRIDGE FLOW RATE (L/s)                          | 1.42 | 0.71 | 0.95 | 0.47 | 0.83 | 0.32 |



COWPER STREET

BOLD STREET



LANDSCAPE PLAN: ground fr scale: 1:200

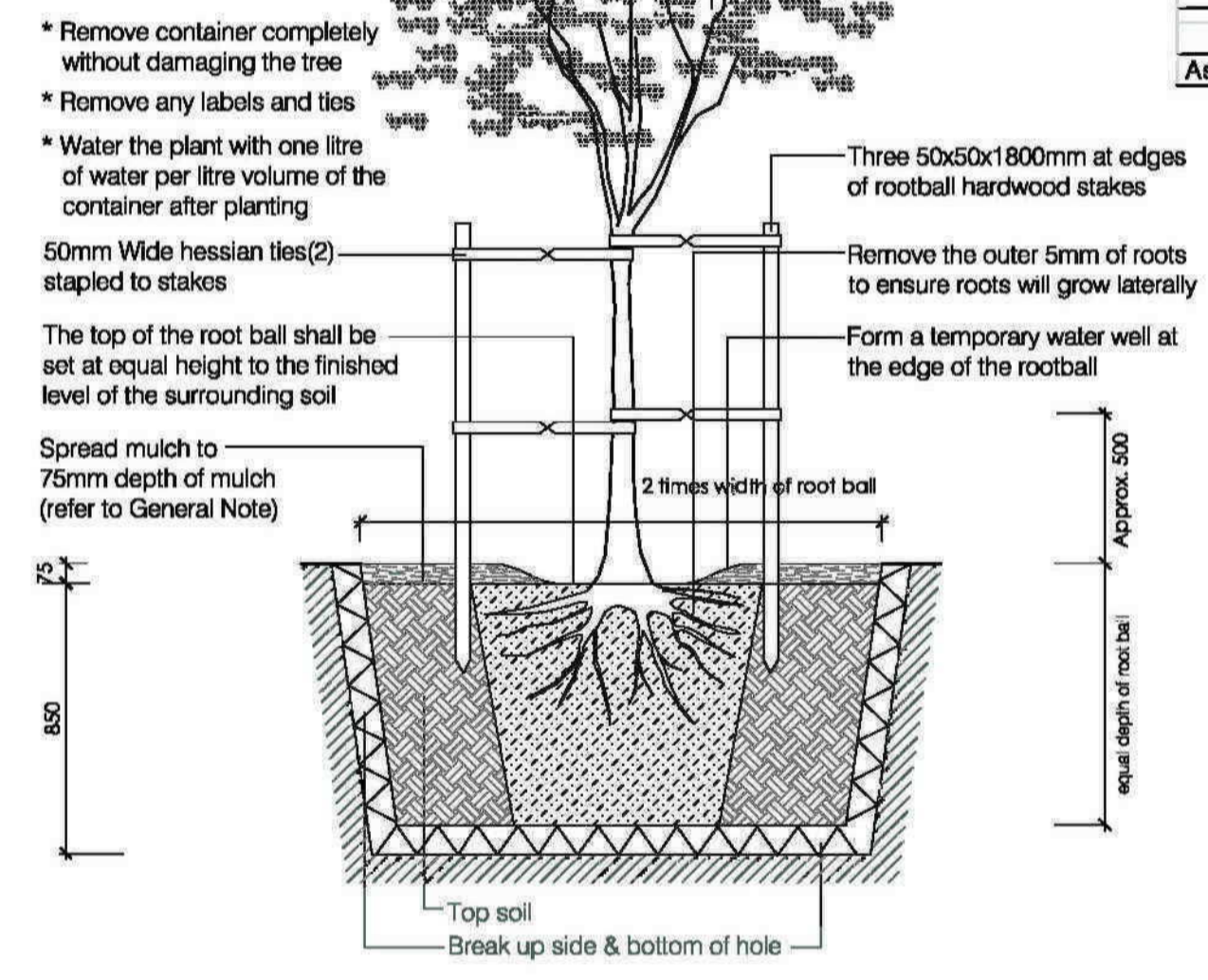
PROPOSED PLANTING PALETTE



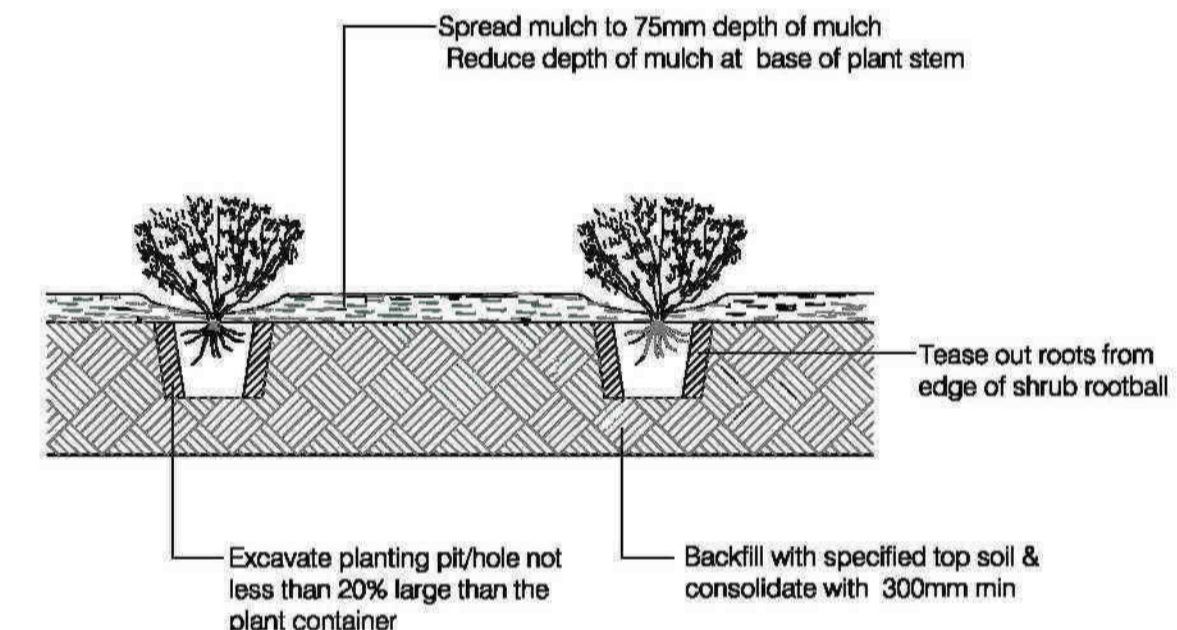
PROPOSED PLANTING SCHEDULE

| CODE                    | BOTANICAL NAME                             | COMMON NAME                     | POT SIZE | MATURE HEIGHT |
|-------------------------|--|---------------------------------|----------|---------------|
| <b>TREES &amp; PALM</b> |  |                                 |          |               |
| ACP                     | <i>Acer palmatum</i>                       | Japanese Maple                  | 45L      | 6m            |
| ANF                     | <i>Angophora floribunda</i>                | Rough-barked Apple              | 45L      | 20m           |
| CIL                     | <i>Citrus Lemon</i>                        | Lemon Tree                      | 45L      | 3m            |
| COM                     | <i>Corymbia maculata</i>                   | Spotted Gum                     | 45L      | 20m           |
| ELR                     | <i>Elaeocarpus reticulatus</i>             | Blue-berry Ash                  | 45L      | 7m            |
| ESR                     | <i>Eucalyptus 'Summer Red'</i>             | Flowering Gum                   | 45L      | 6m            |
| EUP                     | <i>Eucalyptus punctata</i>                 | Spotted Gum                     | 45L      | 20m           |
| LAI                     | <i>Lagerstroemia indica</i>                | Crape Myrtle                    | 45L      | 6m            |
| MAG                     | <i>Magnolia grandiflora 'Little Gem'</i>   | Little Gem Magnolia             | 45L      | 5m            |
| PLR                     | <i>Plumeria rubra</i>                      | Frangipani                      | 45L      | 6m            |
| RHE                     | <i>Rhipis excelsa</i>                      | Lady Palm                       | 25L      | 2m            |
| TRL                     | <i>Tristramia laurina</i>                  | Water Gum                       | 45L      | 8m            |
| ULP                     | <i>Ulmus parvifolia</i>                    | Chinese Elm                     | 45L      | 7m            |
| <b>SHRUBS</b>           |  |                                 |          |               |
| Asam                    | <i>Acmena smithii 'Alym Magic'</i>         | Dwarf Lillypilly                | 200mm    | 0.5m          |
| Cgbf                    | <i>Callistemon 'Great Balls of Fire'</i>   | Great Balls of Fire Bottlebrush | 200mm    | 1.5m          |
| Gaaf                    | <i>Gardenia augusta 'Florida'</i>          | Gardenia 'Florida'              | 200mm    | 1.5m          |
| Pgp                     | <i>Pittosporum 'Green Pillar'</i>          | Green Pillar Pittosporum        | 5L       | 3.5m          |
| Phgr                    | <i>Photinia glabra 'Rubens'</i>            | Photinia                        | 25L      | 2m            |
| Pmy                     | <i>Philotheca myoporoides</i>              | Wax Flower                      | 200mm    | 1.5m          |
| Rism                    | <i>Rapidochloa indica 'Snow Makleri'</i>   | Indian Hawthorn                 | 200mm    | 1.5m          |
| Saas                    | <i>Syzygium australe 'Aussie Southern'</i> | Syzygium 'Aussie Southern'      | 5L       | 2m            |
| Satt                    | <i>Syzygium australe 'Tiny Trev'</i>       | Tiny Trev Lilly Pilly           | 25L      | 1.5m          |

| CODE                 | BOTANICAL NAME                                | COMMON NAME                     | POT SIZE | MATURE HEIGHT |
|----------------------|---|---------------------------------|----------|---------------|
| <b>GROUND COVERS</b> |   |                                 |          |               |
| Ald                  | <i>Alternanthera versicolor</i>               | Ruby leaf alternanthera         | 150mm    | 0.5m          |
| Bnc                  | <i>Bromeliad 'Neosagella 'Cosmos'</i>         | Bromeliad                       | 150mm    | 0.5m          |
| Cllm                 | <i>Cilva minata</i>                           | Kaffir Lily                     | 150mm    | 0.4m          |
| Dcj                  | <i>Dianella caerulea 'Little Jess'</i>        | Flax Lily                       | 150mm    | 0.4m          |
| Dir                  | <i>Dianella revivida</i>                      | Black Arther Flax Lily          | 150mm    | 0.8m          |
| Dmg                  | <i>Duranta Mini Gold</i>                      | Silver Golden Dew Drop          | 200mm    | 0.5m          |
| Dss                  | <i>Dianella Silver Streak</i>                 | Silver Streak Flax Lily         | 150mm    | 0.4m          |
| Isn                  | <i>Isotria medeoloides</i>                    | Nobby Club-rush                 | 200mm    | 0.5m          |
| Juu                  | <i>Juncus usitatus</i>                        | Tussock Rush                    | 200mm    | 1m            |
| Llm                  | <i>Lilium muscari</i>                         | Lily Turf                       | 150mm    | 0.3m          |
| Lok                  | <i>Lomandra longifolia 'Kathrus'</i>          | Spiny-headed Mat-rush 'Kathrus' | 150mm    | 0.7m          |
| OJ                   | <i>Ophiopogon japonicus 'Black Dragon'</i>    | Mondo Grass                     | 100mm    | 0.3m          |
| Par                  | <i>Pennisetum actinatum 'Rubrum'</i>          | Purple Fountain Grass           | 150mm    | 1.5m          |
| Pea                  | <i>Pennisetum alopecuroides 'cuttler'</i>     | Black Lea                       | 150mm    | 0.8m          |
| Phx                  | <i>Phalodendron Xanadu</i>                    | Xanadu                          | 200mm    | 0.8m          |
| Scs                  | <i>Scaevola aemula</i>                        | Fan Flower                      | 300mm    | 0.3m          |
| TJ                   | <i>Trachelospermum jasminoides</i>            | Chinese Star Jasmine            | 150mm    | 0.3m          |
| TJ                   | <i>Trachelospermum jasminoides 'Tricolor'</i> | Variagated Jasmine              | 150mm    | 0.3m          |
| <b>ACCENT PLANTS</b> |   |                                 |          |               |
| Aga                  | <i>Agave attenuata</i>                        | Century Plant                   | 200mm    | 1.5m          |
| Aic                  | <i>Alpinia caerulea 'Atheron form'</i>        | Red back australian ginger      | 200mm    | 2m            |
| Cac                  | <i>Cordyline australis 'Cabernet'</i>         | Cordyline Cabernet              | 200mm    | 1.5m          |
| Cot                  | <i>Cordyline terminalis 'Tricolor'</i>        | TI Plant                        | 200mm    | 2m            |
| Doe                  | <i>Doryanthes excelsa</i>                     | Gymea Lily                      | 5L       | 2m            |
| Drn                  | <i>Drosera Marginata</i>                      | Dragon Tree                     | 250mm    | 2m            |
| Phbb                 | <i>Phormium 'Bronze Baby'</i>                 | Bronze Baby Flax                | 200mm    | 0.8m          |
| Std                  | <i>Strelitzia reginae dwarf</i>               | Dwarf Bird-of-Paradise          | 200mm    | 0.6m          |
| Yue                  | <i>Yucca elephantipes</i>                     | Yucca                           | 200mm    | 2m            |
| <b>TURF GRASS</b>    |   |                                 |          |               |
| As noted             | <i>Stenotaphrum secundatum</i>                | Sr Walter Buffalo               | N/A      |               |



TYPICAL DETAIL 01: metal edging scale: 1:25



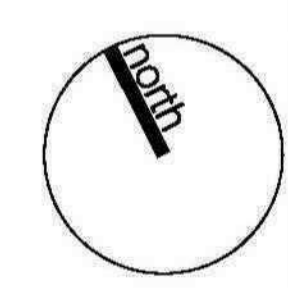
TYPICAL DETAIL 02: shrub planting scale: 1:20

LEGEND

- Existing trees to be protected & retained
- Proposed street trees to Council's specification
- Proposed small tree planting (refer to proposed plant schedule)
- Proposed shrub planting (refer to proposed plant schedule)
- Proposed accent planting (refer to indicative plant schedule)
- Proposed groundcover planting (refer to proposed plant schedule)
- Proposed conc. unit paving with feature banding
- Proposed timber deck
- Proposed turf area (refer to indicative plant schedule)
- Proposed feature tile/conc. paver banding
- Proposed conc. paving with stencil conc. banding (driveway)
- Proposed exposed aggregate conc. paving
- Proposed water feature wall
- Proposed timber + steel pergola
- Proposed on-structure planter
- Proposed feature sandstone boulders
- Proposed cast-in-situ conc. bench
- Proposed underground OSD tank to Hydraulic Eng's detail
- Design levels
- Existing levels
- Site boundary



2-6 Bold St & 80-82 Cowper St, Granville NSW

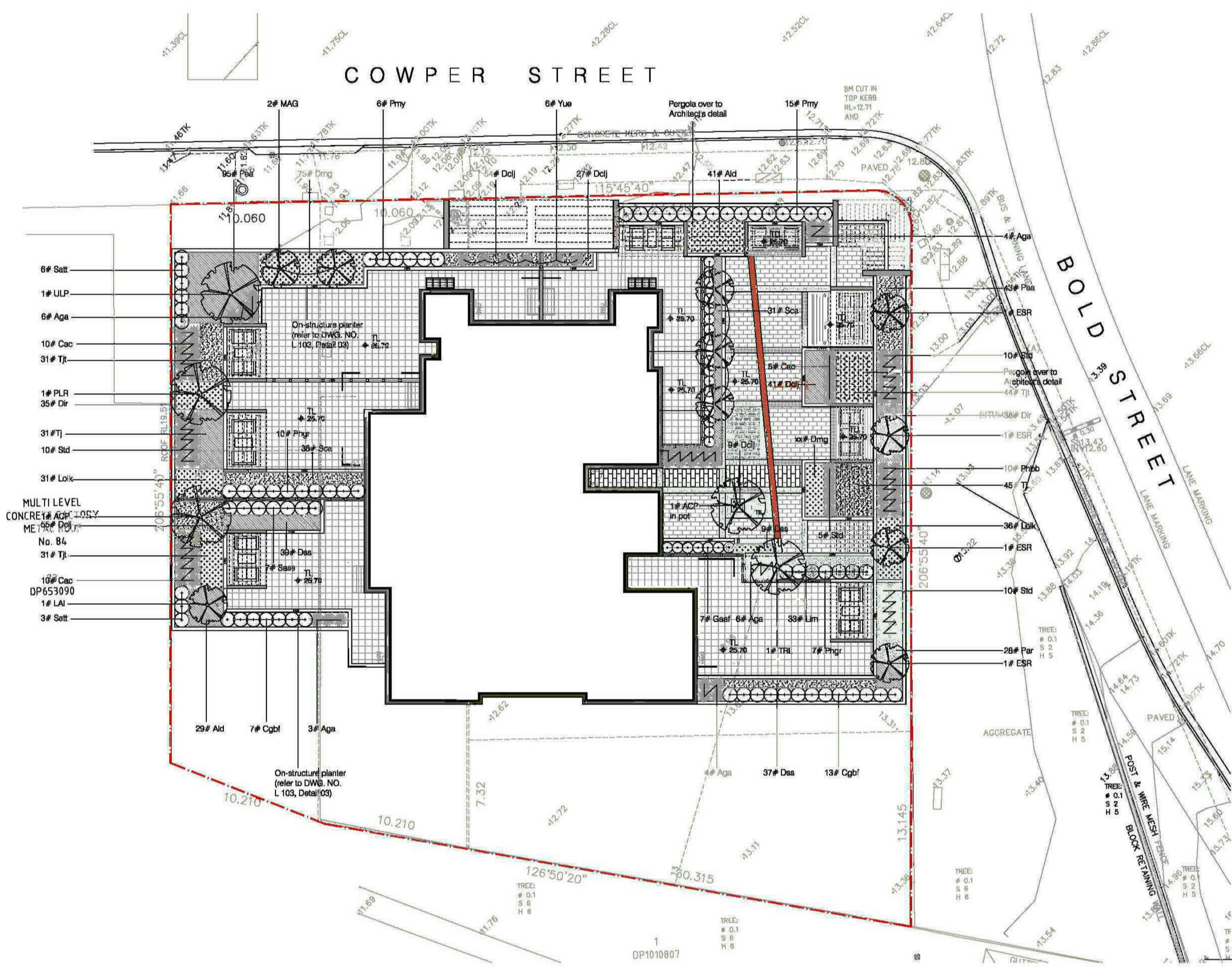


dwg title  
landscape plan:  
ground fr +  
typical detail 01 & 02

scale: 1:200 & as shown @a1  
dwg no.: DA-L101  
Client:  
Designer Home Constructors

| revision        | date     |
|-----------------|----------|
| A da submission | 30/06/14 |
| B da amendments | 09/02/15 |
| C da amendments | 17/08/15 |
| D da amendments | 31/08/15 |

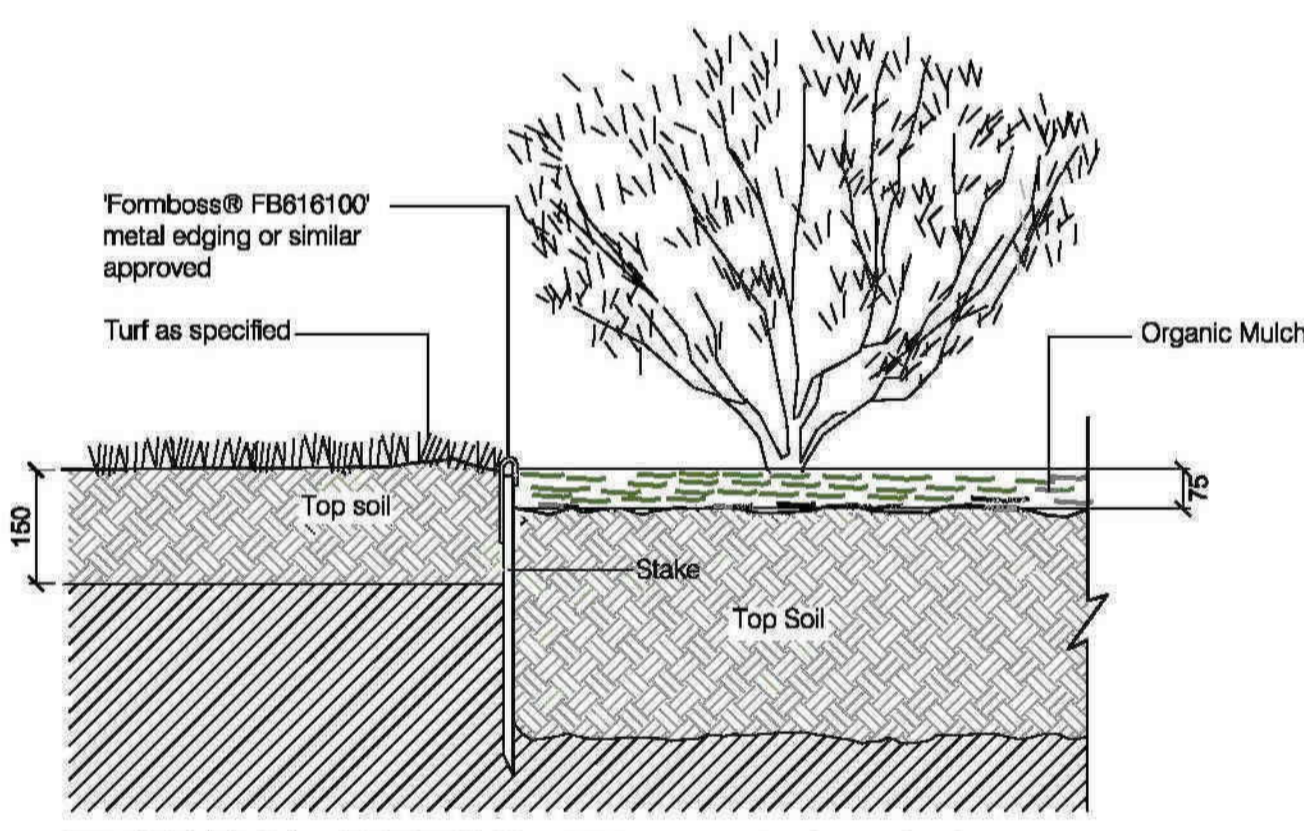
Do not scale off this drawing. Use figured dimensions only. Resolve discrepancies with The Landscape Architect before proceeding. Copyright of this drawing and designs executed remains vested in CANVAS landscape architects. Copyright remains with the Landscape Architects. Reproduction of this document is not permitted without the approval of the Landscape Architect. Contractors to verify site conditions and dimensions



LANDSCAPE PLAN : level 4 scale: 1:200

PROPOSED PLANTING SCHEDULE

| CODE                    | BOTANICAL NAME                                | COMMON NAME                     | POT SIZE | MATURE HEIGHT |
|-------------------------|---|---------------------------------|----------|---------------|
| <b>TREES &amp; PALM</b> |   |                                 |          |               |
| ACP                     | <i>Acer palmatum</i>                          | Japanese Maple                  | 45L      | 6m            |
| ANF                     | <i>Angophora floribunda</i>                   | Rough-barked Apple              | 45L      | 20m           |
| CIL                     | <i>Citrus Lemon</i>                           | Lemon Tree                      | 45L      | 3m            |
| COM                     | <i>Corymbia maculata</i>                      | Spotted Gum                     | 45L      | 20m           |
| ELR                     | <i>Elaeocarpus reticulatus</i>                | Blue-berry Ash                  | 45L      | 7m            |
| ESR                     | <i>Eucalyptus 'Summer Red'</i>                | Flowering Gum                   | 45L      | 6m            |
| EUP                     | <i>Eucalyptus punctata</i>                    | Spotted Gum                     | 45L      | 20m           |
| LAI                     | <i>Lagerstroemia indica</i>                   | Crape Myrtle                    | 45L      | 6m            |
| MAG                     | <i>Magnolia grandiflora 'Little Gem'</i>      | Little Gem Magnolia             | 45L      | 5m            |
| PLR                     | <i>Plumeria rubra</i>                         | Frangipani                      | 45L      | 6m            |
| RHE                     | <i>Rhipis excelsa</i>                         | Lady Palm                       | 25L      | 2m            |
| TRL                     | <i>Tristania laurina</i>                      | Water Gum                       | 45L      | 8m            |
| ULP                     | <i>Ulmus parvifolia</i>                       | Chinese Elm                     | 45L      | 7m            |
| <b>SHRUBS</b>           |   |                                 |          |               |
| Asam                    | <i>Acmena smithii 'Alm Magic'</i>             | Dwarf Lillypil                  | 200mm    | 0.5m          |
| Cgbf                    | <i>Callistemon 'Great Balls of Fire'</i>      | Great Balls of Fire Bottlebrush | 200mm    | 1.5m          |
| Gaf                     | <i>Gardenia augusta 'Florida'</i>             | Gardenia 'Florida'              | 200mm    | 1.5m          |
| Pgp                     | <i>Pittosporum 'Green Pillar'</i>             | Green Pillar Pittosporum        | 5L       | 3.5m          |
| Phgr                    | <i>Photinia glabra 'Rubens'</i>               | Photinia                        | 25L      | 2m            |
| Pmy                     | <i>Philotheca myoporoides</i>                 | Wax Flower                      | 200mm    | 1.5m          |
| Rism                    | <i>Raphiophis indica 'Snow Makler'</i>        | Indian Hawthorn                 | 200mm    | 1.5m          |
| Saas                    | <i>Syzygium australe 'Aussie Southern'</i>    | Syzygium 'Aussie Southern'      | 5L       | 2m            |
| Satt                    | <i>Syzygium australe 'Trey Trev'</i>          | Trey Trev Lily Pilly            | 25L      | 1.5m          |
| <b>GROUND COVERS</b>    |   |                                 |          |               |
| Ald                     | <i>Alternanthera versicolor</i>               | Ruby leaf alternanthera         | 150mm    | 0.5m          |
| Bnc                     | <i>Bromelad Neosagella 'Cosmos'</i>           | Bromeliad                       | 150mm    | 0.5m          |
| Cim                     | <i>Cibea minima</i>                           | Kaffir Lily                     | 150mm    | 0.4m          |
| Dclj                    | <i>Dianella caerulea 'Little Jess'</i>        | Flax Lily                       | 150mm    | 0.4m          |
| Dir                     | <i>Dianella revoluta</i>                      | Black Anther Flax Lily          | 150mm    | 0.8m          |
| Dmg                     | <i>Duranta Mini Gold</i>                      | Dwarf Golden Dew Drop           | 200mm    | 0.5m          |
| Das                     | <i>Dianella Silver Streak</i>                 | Silver Streak Flax Lily         | 150mm    | 0.4m          |
| Isn                     | <i>Isolaps nodosa</i>                         | Nobby Club-rush                 | 200mm    | 0.5m          |
| Juu                     | <i>Juncus usitatus</i>                        | Tussock Rush                    | 200mm    | 1m            |
| Lim                     | <i>Lilium muscari</i>                         | Lily Turf                       | 150mm    | 0.3m          |
| Lok                     | <i>Lomandra longifolia 'Kathrus'</i>          | Spiry-headed Mat-rush 'Kathrus' | 150mm    | 0.7m          |
| Oj                      | <i>Ophiopogon japonicus 'Black Dragon'</i>    | Mondo Grass                     | 100mm    | 0.3m          |
| Par                     | <i>Pennisetum advaria 'Rubrum'</i>            | Purple Fountain Grass           | 150mm    | 1.5m          |
| Pea                     | <i>Pennisetum abjectoides 'cuttler'</i>       | Black Lea                       | 150mm    | 0.8m          |
| Phx                     | <i>Phalodendron Xanadu</i>                    | Xanadu                          | 200mm    | 0.8m          |
| Sca                     | <i>Scaevola aemula</i>                        | Fan Flower                      | 300mm    | 0.3m          |
| Tj                      | <i>Trachelospermum jasminoides</i>            | Chinese Star Jasmine            | 150mm    | 0.3m          |
| Tjt                     | <i>Trachelospermum jasminoides 'Tricolor'</i> | Variiegated Jasmine             | 150mm    | 0.3m          |
| <b>ACCENT PLANTS</b>    |   |                                 |          |               |
| Aga                     | <i>Agave attenuata</i>                        | Century Plant                   | 200mm    | 1.5m          |
| Alc                     | <i>Alpinia caerulea 'Athenon form'</i>        | Red back australian ginger      | 200mm    | 2m            |
| Cac                     | <i>Cordyline australis 'Cabernet'</i>         | Cordyline Cabernet              | 200mm    | 1.5m          |
| Cot                     | <i>Cordyline terminalis 'Tricolor'</i>        | TI Plant                        | 200mm    | 2m            |
| Doe                     | <i>Doyenrus excelsa</i>                       | Gymea Lily                      | 5L       | 2m            |
| Drmm                    | <i>Dracaena Marginata</i>                     | Dragon Tree                     | 250mm    | 2m            |
| Phbb                    | <i>Phormium 'Bronze Baby'</i>                 | Bronze Baby Flax                | 200mm    | 0.8m          |
| Std                     | <i>Strelitzia reginae dwarf</i>               | Dwarf Bird-of-Paradise          | 200mm    | 0.6m          |
| Yue                     | <i>Yucca elephantipes</i>                     | Yucca                           | 200mm    | 2m            |
| <b>TURF GRASS</b>       |   |                                 |          |               |
| As noted                | <i>Stenotaphrum secundatum</i>                | Sr Walter Buffalo               | N/A      |               |



TYPICAL DETAIL 03: metal edging scale: 1:10

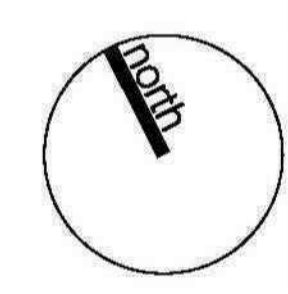
LEGEND

|  |  |  |   |  |   |  |  |
|--|--|--|---|--|---|--|--|
|  | Existing trees to be protected & retained                        |  | Proposed conc. unit paving with feature banding             |  | Proposed water feature wall                             |  | Proposed grated drains to Hydraulic eng's detail |
|  | Proposed street trees to Council's specification                 |  | Proposed timber deck  |  | Proposed timber + steel pergola                         |  | Proposed timber seat                             |
|  | Proposed small tree planting (refer to proposed plant schedule)  |  | Proposed turf area (refer to indicative plant schedule)     |  | Proposed on-structure planter                           |  | Design levels                                    |
|  | Proposed shrub planting (refer to proposed plant schedule)       |  | Proposed feature tile/conc. paver banding                   |  | Proposed feature sandstone boulders                     |  | Existing levels                                  |
|  | Proposed accent planting (refer to indicative plant schedule)    |  | Proposed conc. paving with stencil conc. banding (driveway) |  | Proposed cast-in-situ conc. bench                       |  | Site boundary                                    |
|  | Proposed groundcover planting (refer to proposed plant schedule) |  | Proposed exposed aggregate conc. paving                     |  | Proposed underground OSD tank to Hydraulic Eng's detail |  |  |

PROPOSED PLANTING PALETTE



2-6 Bold St & 80-82 Cowper St, Granville NSW



|   |  |                 |          |
|---|--|-----------------|----------|
| dwg title   | scale: 1:200 & 10 @a1                  | revision        | date     |
| landscape plan:<br>level 4 +<br>typical detail 03 | dwg no.: DA-L103                       | A da submission | 30/06/14 |
|   | Client:<br>Designer Home Construcitons | B da amendments | 17/08/15 |
|   |  | C da amendments | 31/08/15 |

Do not scale off this drawing. Use figured dimensions only. Resolve discrepancies with The Landscape Architect before proceeding. Copyright of this drawing and designs executed remains vested in CANVAS landscape architects. Copyright remains with the Landscape Architects. Reproduction of this document is not permitted without the approval of the Landscape Architect. Contractors to verify site conditions and dimensions